

# SAUDI


**WE PROVIDE  
SOLUTIONS**



شركة الفيصل للصناعات الحديدية  
AL-FAISAL STEEL PRODUCTS CO.  
أحدى شركات شركة الاتفاق للصناعات الحديدية







**Customer satisfaction  
thru excellence in service  
is the true purpose of  
our steel business enterprise.**

**A**s Kingdom of Saudi Arabia's economic development emerge strongly, the steel industry has been enhancing and strengthening the kingdom economic policy and contributing its might. In this course Al-Faisal Steel Products Company (FSPC) was founded in the year of 2003. Since that time the company's operations have expanded to keep pace with growing domestic market needs. Sales offices have been established throughout Saudi Arabia including Dammam, Riyadh and Jeddah. In 2006 Al-Faisal Steel Products Company established a production unit in Makkah to have better customer services in western province. FSPC is one of the leading companies in the manufacturing of **steel mesh, spring wire, fabrication of rebar, fusion bonded epoxy coated rebar, hot and cold rolled rebar, LRPC Strand, Galvanized Steel Wire, Epoxy Coated Welded Wire Mesh, High Carbon steel, Low Carbon steel**. FSPC is the largest downstream company in the region equipped with state-of-the-art production facility. Customized user requirements of pre-fabricated steel reinforcement are evaluated for detailing, fabrication and identification of the components for easy and efficient handling at site.

FSPC is the first domestic downstream steel producer to be certified ISO 9001-2008. We are proud of this achievement and recognize that ISO certificate is the platform on which to build a total quality management system.



# Vision

The vision of FSPC is for a sustainable Saudi steel industry strategically positioned for growth and innovation and emerge as "Leader in Steel Solutions"







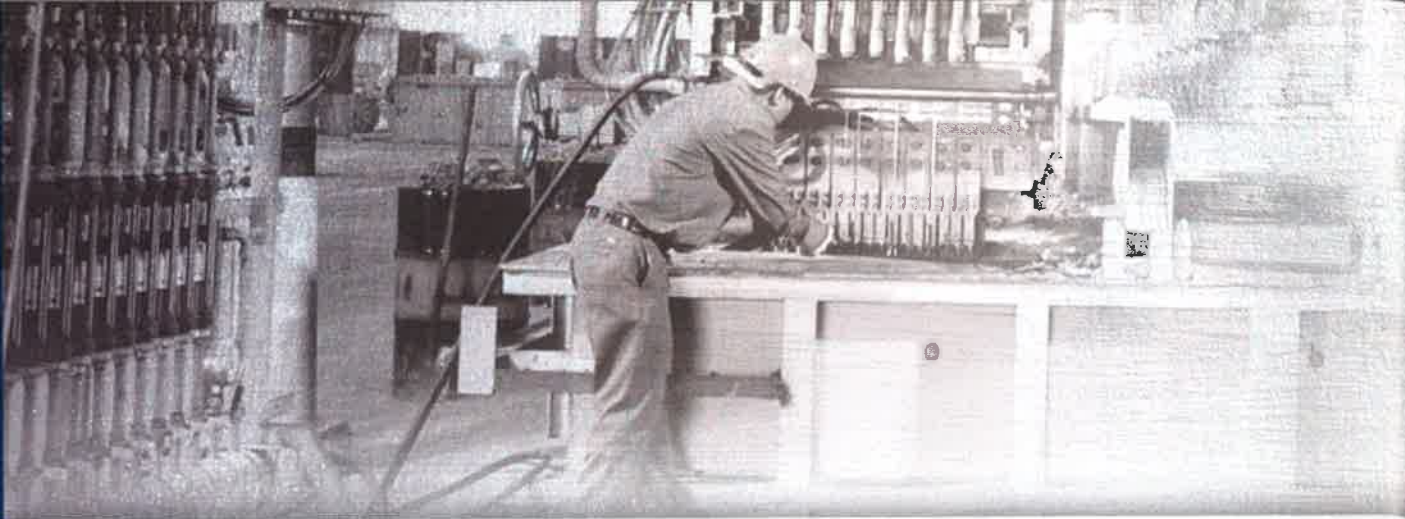
# Mission

We strive consistently to supply high quality products, provide related services and solutions in markets world wide by utilizing innovative technologies in an environment of motivated human resources, continuous improvement, highest business standards, work ethics and corporate citizenship, leading to add value to our customers.

- FSPC identifies unique team spirit and team work, exhibits an excellent blend of experience and energy, be it in the field of management, Administration, Production and Distribution.
- To influence market opinion in support of Saudi Arabian steel industries, committe to manufacture products that meet qualitative requirements of any project.







## Corporate Overview

---

Al Faisal Steel Products Company (FSPC) is well reputed downstream industry and proudly a subsidiary of Al Ittefaq Steel Products Co. based in Dammam, Saudi Arabia. With an annual production of 600,000 MT, we set "New Standards of Excellence" in the steel industries in GCC.

Steel helps build the infrastructure of the modern world. Our position in the industry brings unique opportunities and unique responsibilities. Our future success partly depends on the wider world giving us the freedom and flexibility to succeed.

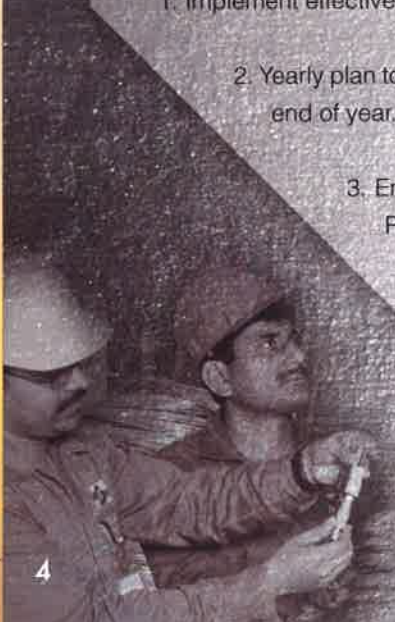
☺ We are growing by leveraging all the advantages we have in terms of geographical size and scale, product expertise and customer focus.

## Quality Policy

---

Al Faisal Steel Products Co. dedicates itself to "Total Quality" and constantly strives for supplying world class goods and services at optimal cost and is committed to:

1. Implement effective Quality Management System and carry out continual improvement in all aspects of business
2. Yearly plan to implement Quality objectives for each department and critically review achievements of the same end of year.
3. Encourage all employees to contribute effectively and positively in improving not only in Quality of Products but also Quality of life by creating and maintaining healthy, clean and safe work environment.
4. Enhance the productivity and efficiency by investing not only in latest technology but also in human asset to improve their knowledge and skill to deliver world class goods and services at optimal cost.





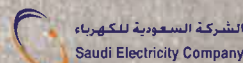
## Approval

Our products are approved by the following "Benchmark Companies of Saudi Arabia" and also ISO 9001-2008 and SASO certified.



**سابك**  
**عنداك**

**ارامكو السعودية**  
**Saudi Aramco**





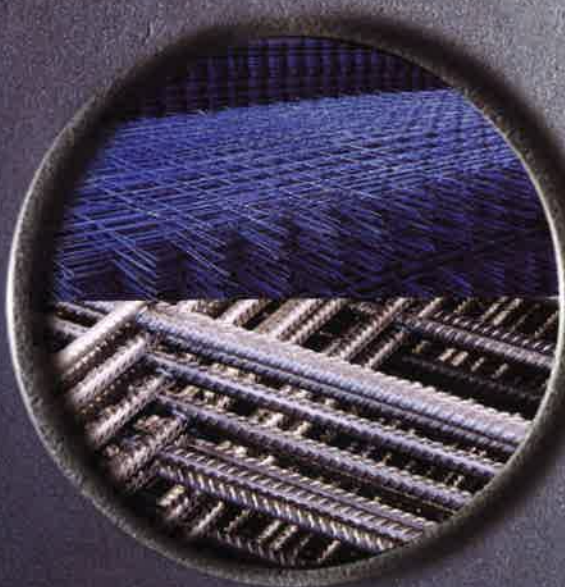
# Our Products



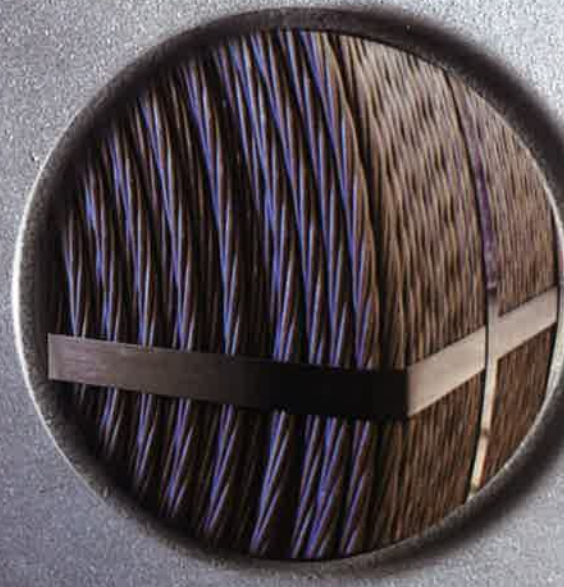
Epoxy Coating (FBEC)



Cut & Bend Black & Epoxy



Welded Wire Mesh Black & Epoxy

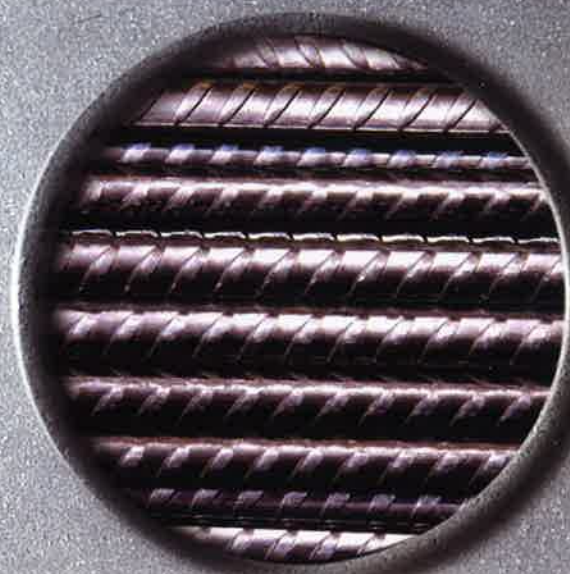


Low Relaxation Pre-Stressed Concrete Strand





Galvanizing Wire



Cold Rolled Coil and Deformed Bar

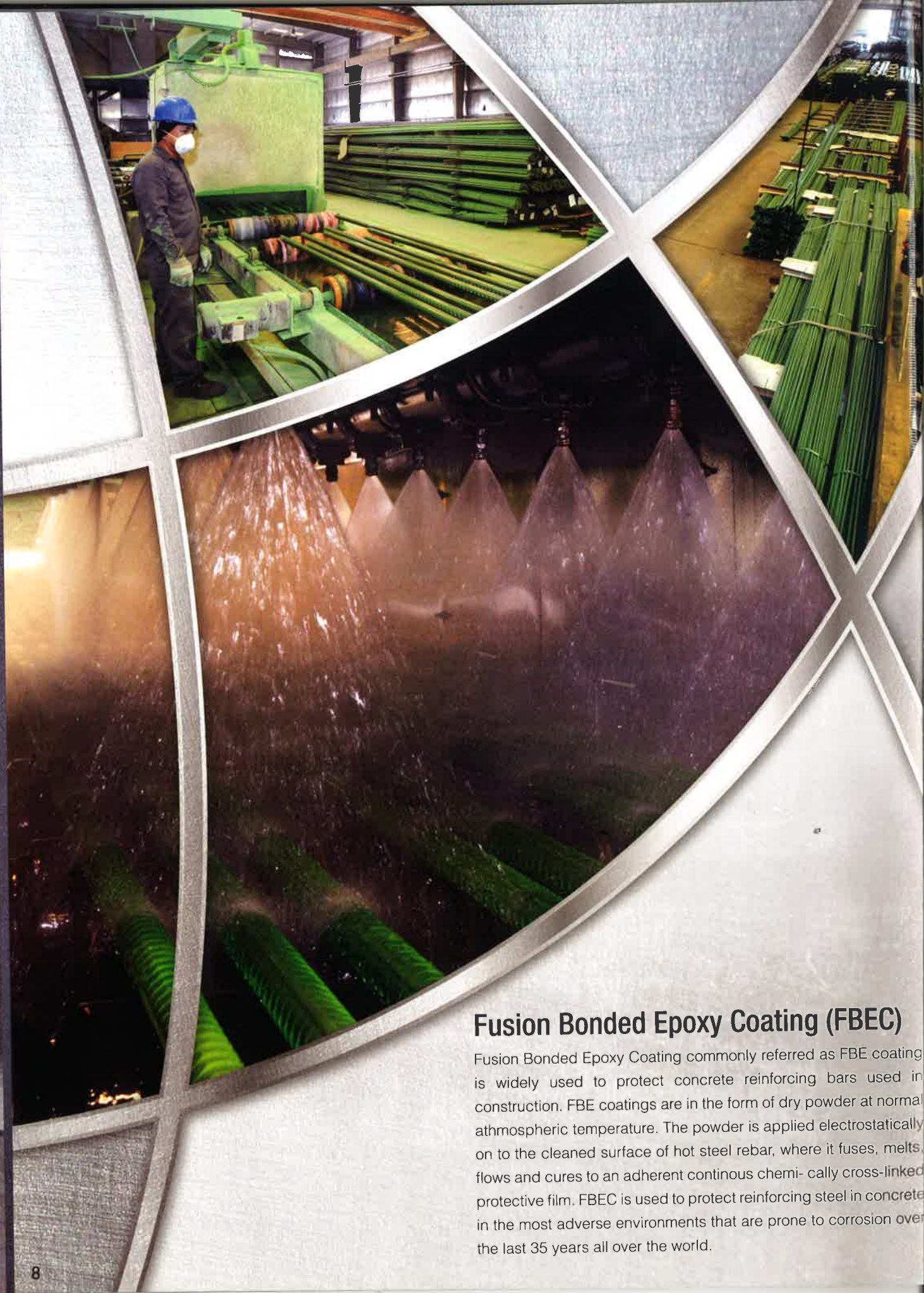


Cold Drawn Wires



Deformed Rebar, Rebar Coil & Plain Wire Rod





# Fusion Bonded Epoxy Coating (FBEC)

Fusion Bonded Epoxy Coating commonly referred as FBE coating is widely used to protect concrete reinforcing bars used in construction. FBE coatings are in the form of dry powder at normal atmospheric temperature. The powder is applied electrostatically on to the cleaned surface of hot steel rebar, where it fuses, melts, flows and cures to an adherent continuous chemically cross-linked protective film. FBEC is used to protect reinforcing steel in concrete in the most adverse environments that are prone to corrosion over the last 35 years all over the world.



## Technical Data Sheet of Fusion Bonded Epoxy Coating

STANDARD: ASTM A775 / A775M.

EPOXY POWDER FROM: JOTUN CORRO-COAT SAUDI ARABIA

S.NO.	DESCRIPTION	STANDARD SPECIFIED REQUIREMENTS
1	VISUAL INSPECTION OF OIL AND GREASE	FREE OF OIL AND GREASE
2	SHOT BLASTING AGAINSTSSP VIS 1	SSPC VIS 1 STANDARD (NEAR WHITE)
3	COPPER SULPHATE TEST MILL SCALE CONTAMINTION	TURN RED COLOUR
4	CHLORIDE TEST	STANDARD REFERENCE (<10 MICRO GRAM / sq cm.
5	SURFACE PROFILE TEST	40 – 115 MICRONS
6	BACK CONTAMINATION TAPE TEST	BACK CONTAMINATION STANDARDS (<20%)
7	TEMPERATURE OF REBARS	232° – 239° C
8	MEK TEST	NO REACTION OF MEK SOLUTION ON EPOXY COATING
9	HOLIDAY TEST	3 HOLES/ PER METER LENGTH (max)
10	THICKNESS OF COATING	175 – 300 MICRONS - Every 2 Hrs.
11	BENDING TEST	BENDING AROUND 6D MANDREL- Every 4 Hrs.

### EPOXY COATED REBAR ASTM A775

Nominal Diameter mm	No. of Bars per bundle	Nominal Weight kg/m	Nominal CSA mm <sup>2</sup>
8	422	0.40	50.3
10	270	0.62	78.5
12	188	0.89	113
14	138	1.21	154
16	106	1.58	201
18	84	2.00	254
20	68	2.47	314
22	56	2.98	381
25	44	3.85	491
28	34	4.83	616
32	26	6.31	804